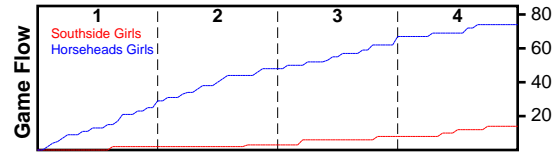


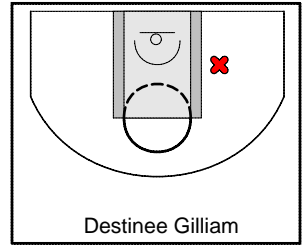
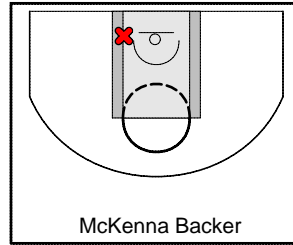
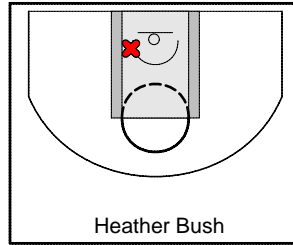
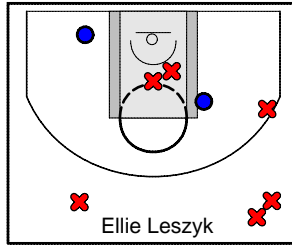
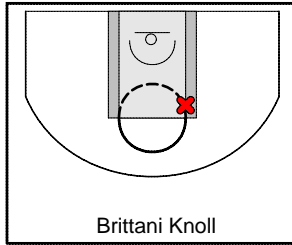
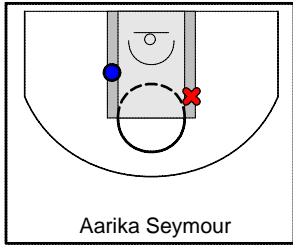
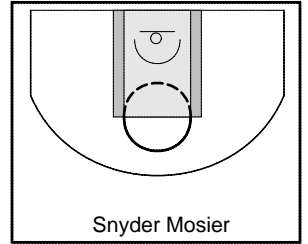
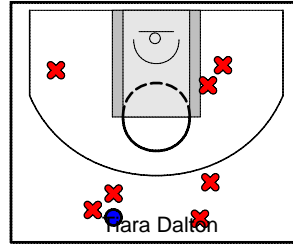
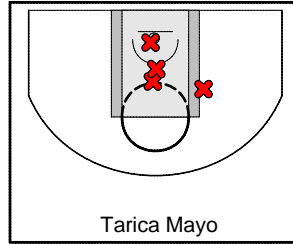
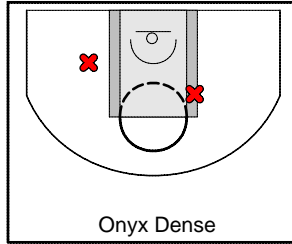
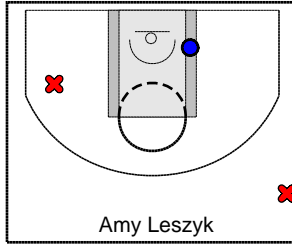
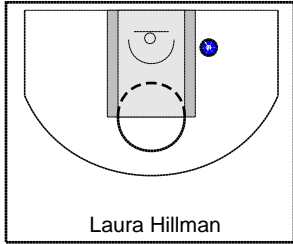
Southside Girls

12/26/10 Southside Girls at Horseheads Girls

	1	2	3	4	T
Southside Girls	2	1	5	6	14
Horseheads Girls	27	21	19	7	74



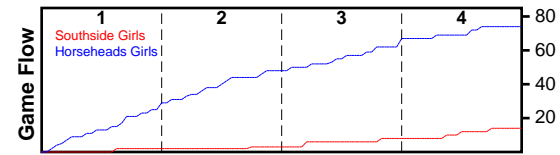
#	Name	G	MIN	FGM	FGA	FG%	2PM	2PA	2P%	3PM	3PA	3P%	FTM	FTA	FT%	OREB	DREB	REB	AST	STL	BLK	TO	PF	PTS
1	Laura Hillman	1	9	1	1	1.000	1	1	1.000	0	0	0.000	0	0	0.000	0	1	1	0	0	0	1	1	2
5	Amy Leszyk	1	8	1	3	0.333	1	1	1.000	0	2	0.000	0	0	0.000	0	2	2	0	0	0	2	1	2
11	Onyx Dense	1	11	0	2	0.000	0	2	0.000	0	0	0.000	1	2	0.500	2	2	4	0	0	0	1	1	1
12	Tarica Mayo	1	8	0	4	0.000	0	4	0.000	0	0	0.000	0	0	0.000	0	1	1	0	0	0	1	0	0
13	Tiara Dalton	1	22	1	8	0.125	0	3	0.000	1	5	0.200	0	0	0.000	1	3	4	0	1	0	5	2	3
14	Snyder Mosier	1	15	0	0	0.000	0	0	0.000	0	0	0.000	0	0	0.000	0	0	0	0	0	0	0	1	0
15	Aarika Seymour	1	23	1	2	0.500	1	2	0.500	0	0	0.000	0	0	0.000	0	0	0	0	0	0	1	2	2
22	Brittani Knoll	1	10	0	1	0.000	0	1	0.000	0	0	0.000	0	0	0.000	1	0	1	0	0	0	0	0	0
23	Ellie Leszyk	1	20	1	9	0.111	1	4	0.250	0	5	0.000	0	0	0.000	0	2	2	0	0	1	4	2	2
30	Heather Bush	1	12	0	1	0.000	0	1	0.000	0	0	0.000	0	0	0.000	0	0	0	0	0	0	0	2	0
32	McKenna Backer	1	14	0	1	0.000	0	1	0.000	0	0	0.000	2	4	0.500	2	0	2	1	1	0	2	1	2
34	Destinee Gilliam	1	13	0	1	0.000	0	1	0.000	0	0	0.000	0	2	0.000	0	1	1	0	0	0	1	1	0
TOTALS		1	32	5	33	0.152	4	21	0.190	1	12	0.083	3	8	0.375	6	12	18	1	2	1	18	14	14



Horseheads Girls

12/26/10 Southside Girls at Horseheads Girls

	1	2	3	4	T
Southside Girls	2	1	5	6	14
Horseheads Girls	27	21	19	7	74



#	Name	G	MIN	FGM	FGA	FG%	2PM	2PA	2P%	3PM	3PA	3P%	FTM	FTA	FT%	OREB	DREB	REB	AST	STL	BLK	TO	PF	PTS
2	Emily Capek	1	14	1	4	0.250	0	1	0.000	1	3	0.333	1	4	0.250	1	1	2	0	0	0	1	0	4
3	Tess Wicks	1	11	2	5	0.400	2	5	0.400	0	0	0.000	0	4	0.000	3	2	5	0	0	0	0	1	4
5	Kasey Harter	1	14	3	3	1.000	3	3	1.000	0	0	0.000	0	0	0.000	0	1	1	0	0	0	0	1	6
10	Katelyn Goodwin	1	16	3	5	0.600	3	5	0.600	0	0	0.000	1	2	0.500	0	2	2	0	0	0	0	2	7
12	Jen Laviola	1	15	0	1	0.000	0	1	0.000	0	0	0.000	3	4	0.750	1	0	1	1	1	0	3	0	3
20	Alyssa Derichie	1	15	4	6	0.667	4	6	0.667	0	0	0.000	0	3	0.000	1	8	9	6	5	0	1	0	8
21	Amanda Slowik	1	11	2	3	0.667	2	3	0.667	0	0	0.000	1	2	0.500	1	2	3	0	0	0	0	0	5
24	Miranda Keefe	1	15	1	2	0.500	1	1	1.000	0	1	0.000	0	0	0.000	0	0	0	1	1	0	0	0	2
25	Jen Chalk	1	12	5	9	0.556	5	9	0.556	0	0	0.000	1	1	1.000	2	0	2	0	3	0	1	2	11
32	Abbey Donahue	1	14	4	6	0.667	4	4	1.000	0	2	0.000	0	0	0.000	1	0	1	0	1	0	0	1	8
44	Jenah Labunski	1	11	2	6	0.333	2	6	0.333	0	0	0.000	2	2	1.000	2	2	4	0	1	1	0	1	6
45	Amanda Schiefen	1	18	5	7	0.714	5	7	0.714	0	0	0.000	0	2	0.000	6	3	9	0	1	0	0	1	10
TOTALS		1	32	32	57	0.561	31	51	0.608	1	6	0.167	9	24	0.375	18	21	39	8	13	1	6	9	74

